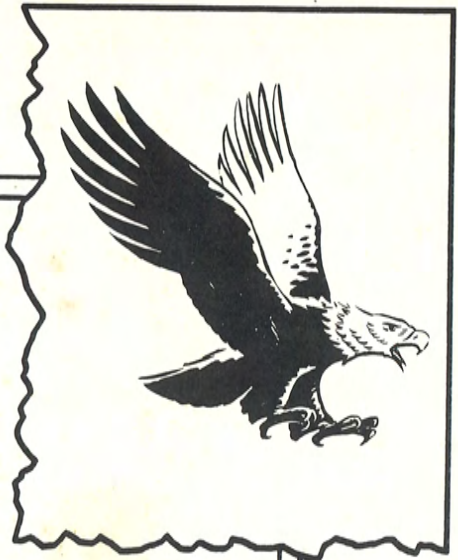




THE EAGLE

1960-1961

The



Eagle

MIDWAY RURAL HIGH SCHOOL

• Gale W. McNemee
Editor

Dedication



Through his several years of service to our school as a board member, helping to improve our school in all aspects - we, the annual staff of 1960-1961, with deep respect and appreciation, proudly dedicate this annual to ALVA M. RICKLEFS.



Principal's Message

I wish to express my thanks to the members of the faculty, to the student body and to the citizens of the community who cooperated in making this a successful school year.

It is our sincere hope that you who are leaving us, and who shall remain, will have nourished your hopes and dreams; we hope we have helped plant in you the desire to become the worthwhile citizen and leader we know you are capable of being.

Charles T. Shurt

School Board



FRONT ROW: Charles Hartmen, Richard Myre, Warren Albers.
BACK ROW: Ferdie Libel, Kenneth Bottiger.

Annual Staff



Gale McNemee, Editor



Tom Turpin, Sport Manager
Linda Denton, Layout Manager
Dick Herpich, Photographer



Dolores Diebolt, Photographer
Bob Tilbury, Asst. Editor
Donna Hartmen, Business Manager



Faculty

HOMER T. McCOOLE
Arkansas State Teachers College

Typing I and II
Algebra I
Advanced Mathematics
Pep Club Sponsor



RACHEL NOBLE
Kansas University

Algebra I
Geometry
Advanced Algebra
Student Council Sponsor



JAMES D. LEE
Pittsburg State College

General Science
Biology
Chemistry
Football Coach
Track Coach
Junior Sponsor



SHARON L. WATKINS
Emporia State Teachers College

Office Management
Shorthand
Bookkeeping
Girls' P. E. and Health
Senior Sponsor

GRETA PRY
Fort Hays State College

English I, II, III, IV
Library



DONALD D. COMPTON
Wm. Jewell College

World History
French I and II
Music
Junior Co-Sponsor



JEANNE CASE
Emporia State Teachers College

Home Economics
Psychology
Sociology
Freshman Sponsor

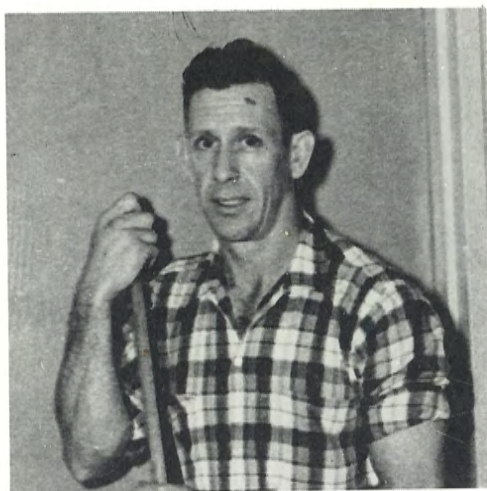


WILLIAM D. THURLOW
Kansas State University

Constitution
Auto Mechanics
Boys' P. E. and Health
Basketball Coach
Sophomore Sponsor

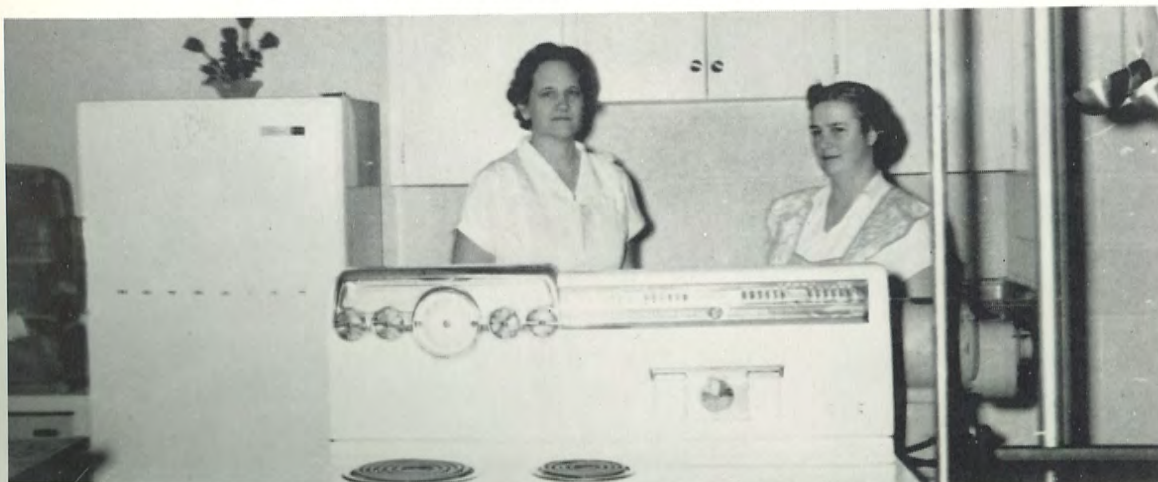


BUS DRIVERS: George Moore, Vernie Bruning, Dale Walsh, Warren Diebolt.



CUSTODIAN: Bob Dickson

COOKS: Alice Albers, Mary Francis Ricklefs.





Seniors



TOM TURPIN

M Club	2, 3, 4
Track	2, 3, 4
Basketball	1, 2, 3, 4
Pep Club	2, 3, 4
Class President	1, 4
Student Council	3, 4
Annual Staff	4
Paper Staff	4
Play Cast	1, 3, 4
Class Officer	1, 3, 4

SARAH STAUDENMAIER

Class Officer	1, 3, 4
Pep Club	1, 2, 3, 4
Pep Club Sec.	1, 2
Student Council	2
M Club and Board	4
Cheerleader	3, 4
Paper Staff	4
Play Cast	1, 3, 4
Homecoming Queen	3
Halloween Queen Cand.	4
Basketball	3, 4
Music Ensembles	1, 2, 4



SHARON SEXTON

Class Officer	2
Play Cast	4
Paper Staff	4
Pep Club	1, 2, 3, 4
Basketball	2, 4
Music	1, 2
Music Ensembles	2



NEALE ELLSWORTH

Basketball	1
Football	1
Track	1
Class Reporter	1
Play Cast	4



ROBERT TILBURY
 Class V. -Pres. 1, 3, 4
 Chorus 1
 Play Cast 1, 3, 4
 Student Council 4
 Student Manager 2
 Basketball 1, 3, 4
 Softball 1
 Pep Club 3, 4
 Annual Staff 4
 Paper Staff 4



VIRGINIA FULK
 Music 1, 2, 3, 4
 Music Ensembles 1, 3, 4
 Play Cast 2, 3, 4
 Pep Club 1, 2, 3, 4
 Pep Club President 4
 Pep Club V. -Pres. 3
 Class Officer 3, 4
 M Club and Board 4
 Cheerleader 4
 Basketball 1, 2, 4
 Paper Staff 4



JOHN LIBEL
 Basketball 1, 4
 Track 1, 4
 Band 1, 2
 Pep Club 1, 2
 Class President 2
 Play Cast 3, 4
 Paper Staff 4
 Softball 1

CONNIE RUHNKE
 Student Council 3
 Pep Club 3, 4
 Paper Staff 4
 Play Cast 4

DISCARD



LEROY HEINEN

Football	1, 2, 3, 4
Track	1, 2, 3
Basketball	1, 2
Class Officer	1
Student Council	2
M Club	1, 2, 3, 4
M Club V. -Pres.	4
Play Cast	4
Paper Staff	4
Co-Captain (football)	4
Softball	1

GALE McNEMEE

Softball	1
Track	1, 2, 3, 4
Basketball	1, 2, 3, 4
Football	4
M Club	2, 3, 4
Pep Club	3
Class President	3
Class Treasurer	2
Student Council	4
Play Cast	1, 2, 3, 4
Annual Editor	4
Paper Staff	4
Music	1, 2, 3, 4
Watermelon Bud Cand.	4



LINDA DENTON

Class President	1
Class Sec.	2
Student Council	1, 3, 4
Student Council Pres.	3, 4
Pep Club	1, 2, 3, 4
Pep Club Sec.	3
Music	1, 2, 4
Music Ensembles	1, 4
M Club and Board	4
Basketball	1, 2, 3, 4
Photography Club	4
Paper Co-Editor	4
Annual Staff	4
Play Cast	3, 4



BARBARA LIBEL

Basketball	1
Paper Staff	4
Pep Club	1
Play Cast	4
Apple Blossom Cand.	4



RONNIE GODFREY

Glee Club	1
Pep Club	3
Basketball	1, 2, 3
Softball	1
Football	2
Track	1
Play Cast	4



DOLORES DIEBOLT

Annual Staff	4
Paper Staff	4
Student Council	4
Pep Club	2, 3, 4
Pep Club V. -Pres.	4
Photography Club Pres.	4
Basketball	2, 3, 4
M Club and Board	4
Play Cast	3, 4
Music	2
Triple Trio	3
Homecoming Queen	4



DONNA HARTMAN

Class Treasurer	4
Annual Staff	4
Paper Co-Editor	4
Play Cast	3
Pep Club	3, 4



RUSSELL NIGUS

Football	1, 2, 3, 4
Basketball	1, 2, 3, 4
Track	1, 2
Softball	1
Class Officer	1
M Club President	4
M Club	1, 2, 3, 4
Student Council	3
Paper Staff	4
Co-Captain (football)	3, 4



MELVIN SCHOENFELDER

Basketball	1
Track	1, 2, 3
Football	2, 3
M Club	2, 3, 4
Softball	1
Pep Club	2
Play Cast	3, 4



LYDIA MANTHE

Basketball	1, 2
Pep Club	1, 2, 3, 4
Play Cast	3, 4
Glee Club	1, 2



NORMAN VANDERSLICE

Basketball	1, 2, 3
Football	3, 4
Softball	1
Track	1, 2, 3
M Club	3, 4
Play Cast	4



BILL OSTRANDER

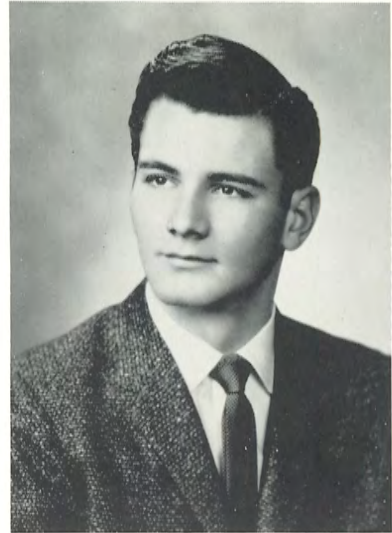
Track	1, 2, 3, 4
Basketball	3, 4
Football	4
Play Cast	3
M Club	4
M Club Treasurer	4
Pep Club	3





WARE STERNE

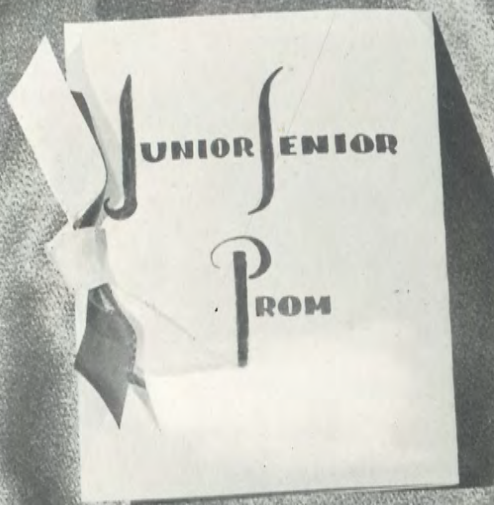
Football	1
Wrestling	1, 2, 3
Tennis	2, 3
Play Cast	1



DICK HERPICH

Cross Country	4
Track	1, 2, 3, 4
Football	3
Basketball	1
M Club	2, 3, 4
Annual Staff	4
Paper Staff	4
Pep Club	1, 2, 3, 4
Softball	1
Play Cast	4





Juniors

Class of '62

CLASS OFFICERS

President - Eddie Libel, Vice-President - Shirley Hartman, Secretary - Mary Jane Weingart, Treasurer - Linda Kessinger.



Frances
Neal
Gene
Simpson
Gary
Gronniger



Mary Jane
Weingart
Don
McNett
Maurine
Ricklefs
Richard
Anderson



Jane
Moore
Charles
Ptomey
Wilma Jean
Myre
Ronnie
Sexton

Shirley
Hartman
Bill
McEnulty
Bruce
Denton
Bob
Miller



Eddie
Libel
Linda
Kessinger
Jim
Urban
Danny
Brox



Marilyn
Schoenfelder
Tom
George
Sharon
Nesbitt
Dean
Simpson



Darrell
Cluck
Wilma Jean
Matthias
Dennis
Ricklefs
Janice
Franklin



Helen
Turpin
Alan
Nocks
Judy
Frump
Bernard
Libel





Sophomores



Jerry Joyce, President; Diann Diebolt, Secretary; Bob Meidinger, Treasurer; Bill Keebler, Vice-President.

Class of '63



Mary Lou Gormley
Jerry Joyce
Jeanie Jamvold



Fay Miller
Kay Ptomey
Paul McNemee
Sharon Tilbury



Paul Weingart
Delilah Chase
James Ricklefs
Aklyn Foster

Bob Meidinger
Danny Godfrey
Carol Pauly
Marion Schuetz



Bill Keebler
Diann Diebolt
Larry Haupt
Alvin Miner



LaRene Long
George Brassfield
Franklin Peuker
Linda Simmons

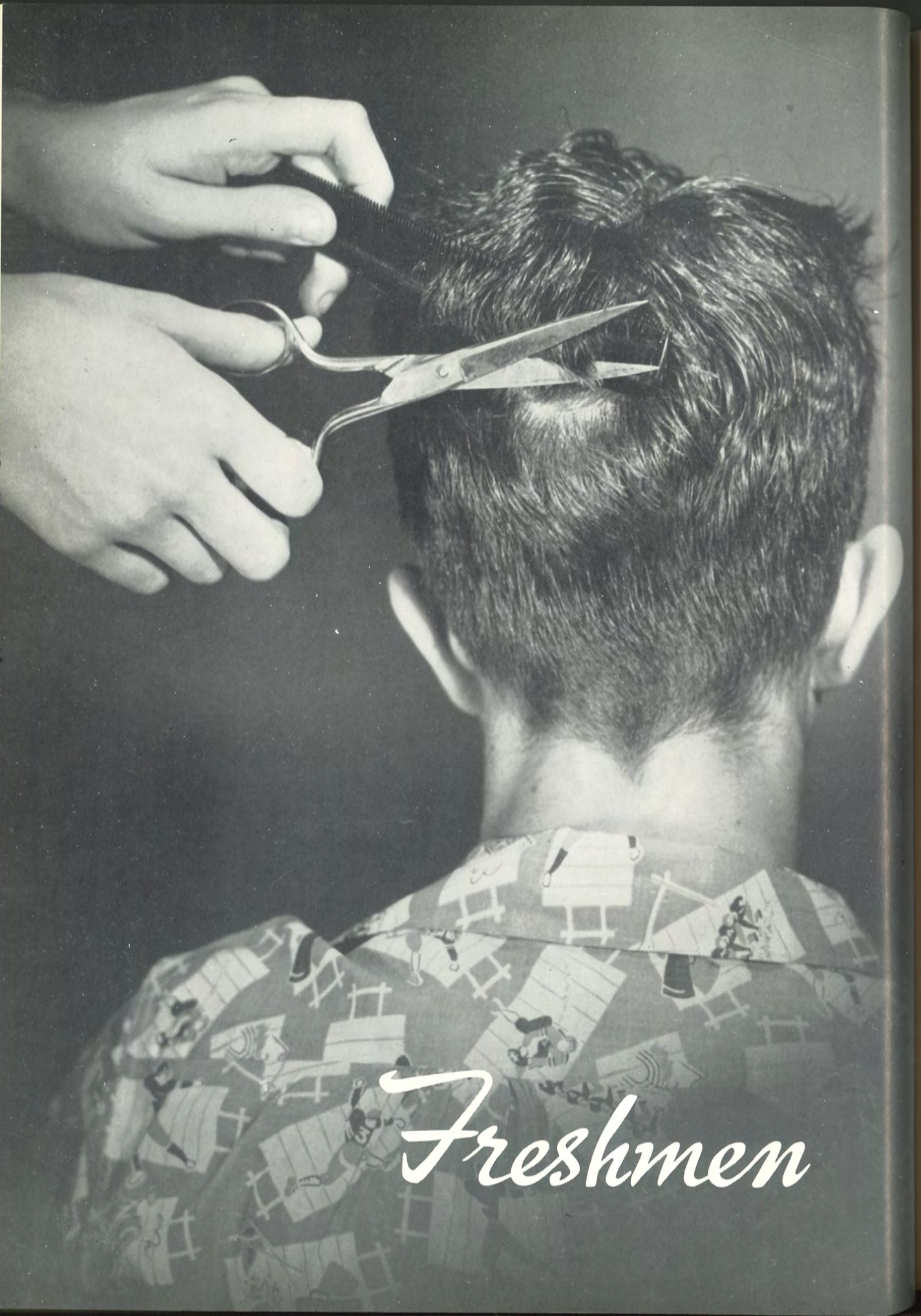


Francis Long
Gene Laverentz
Shirley Keling
Jerry Bottiger



Bob Pauly
Janet Holzhey
Dennis Donaldson
Else Meinardus





Freshmen



Beverly Helmstetter - Vice-President; Mark Matthias - Secretary; Tom Bottiger - President; Cynthia Mix - Treasurer.

Class of '64



Carol
Laverentz
Paul
Boos
Cheryl
Schuetz
Byron
Johnson

Mary
Staudenmaier
Lewis
Myers
Cheryl
Ruch
Raymond
McNett

Mary Jane
Jones
Roger
Gormley
Mary Lou
Diebolt
Steve
Libel



Kathleen
Libel
Jack
Soden
Anita
Gronniger
Vernon
Kuhnert



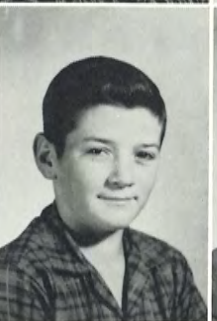
Larry
Rowland
Mary Lou
Jamvold
John
Severin
Vicki
Weingart



Betty
Hartman
James
Meredith
Cynthia
Mix
Mark
Matthias



Tom
Bottiger
Linda
George
Kenneth
Smith
Beverly
Helmstetter



Phyllis
Ricklefs
Max
Pinkston
Marlene
Urban
Warren
Ricklefs



Activities



GIRLS' GLEE CLUB - FIRST ROW: M. Jones, L. Long, K. Ptomey, V. Weingart, V. Fulk, C. Ruch, E. Meinardus, J. Franklin, J. Moore. SECOND ROW: M. Urban, S. Keling, L. Simmons, B. Helmstetter, M. Schoenfelder, A. Foster, D. Diebolt, M. Weingart, H. Turpin, L. Kessinger, S. Tilbury. THIRD ROW: J. Holzhey, S. Nesbitt, C. Laverentz, M. Ricklefs, M. Gormley, W. Myre, F. Neal, Mr. Compton.



SENIOR TRIO - Virginia Fulk, Sarah Staudenmaier, Linda Denton.



BOYS' QUARTET - Richard Anderson, Gene Laverentz, Eddie Libel, Gale McNemee.





TRIPLE TRIO

J. Holzhey
 S. Nesbitt
 M. Jones
 F. Neal
 M. Staudenmaier
 A. Foster
 L. Long
 J. Franklin
 C. Ruch

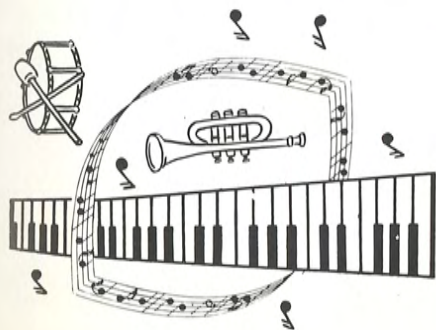


MR. COMPTON

The music program this year consisted of several different ensembles and the girls' glee club. By the hard work and time exerted by Mr. Compton, the music teacher, there were many fine presentations at school and community events.



GIRLS' SEXTET - S. Staudenmaier, C. Ruch, V. Fulk, L. Denton, L. Long, J. Holzhey.



MIXED OCTET - S. Nesbitt, W. Myre, J. Franklin, F. Neal, G. McNemee, E. Libel, G. Laverentz, R. Anderson.

Government Day



Midway Homecoming *1960*



QUEEN DOLLY



ATTENDANT



ESCORTS



ATTENDANT

Parties

INITIATION



HALLOWEEN



SOPHOMORE



FRESHMAN



JUNIOR



JUNIOR-SENIOR BANQUET AND PROM



AWARDS BANQUET



Queens

SARAH STAUDENMAIER
Halloween Queen Candidate



BARBARA LIBEL
Apple Blossom Candidate



Witch and Goblin



Sweetheart King and Queen



DIANN and GENE



MARY JANE and DANNY



JUNIOR PLAY



K-36 PLAYS



Plays

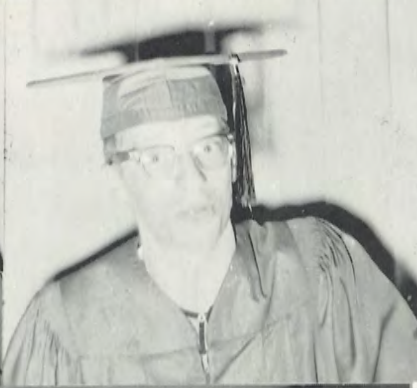
CHRISTMAS PLAY



SENIOR PLAY



Senior Activities





Athletics



FRONT ROW: B. Miller, L. Heinen, N. Vanderslice, R. Nigus, B. Ostrander, G. McNemee, D. Ricklefs. SECOND ROW: R. Godfrey, J. Bottiger, G. Laverentz, E. Libel, R. Anderson, B. Denton, B. Pauly, B. Keebler, J. Joyce, T. George - Student Manager. BACK ROW: Coach Thurlow, J. Soden, J. Severin, T. Bottiger, P. Boos, R. Gormley, F. Peuker, W. Ricklefs, F. Miller, J. Ricklefs, Coach Lee.



BENDENA STATE BANK

Football

The 1960 Eagle football team finished their fall campaign with a record of five wins and three losses. The Eagle victories were over Horton, Everest, Elwood, Wathena, and Robinson. The defeats were rendered to the Midway squad by Troy, Centralia, and Highland.

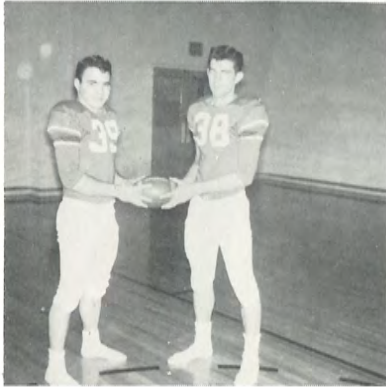
The Eagles finished in second place in the K-36 League along with Highland and Wathena.

The Eagle squad was led by a group of our departing seniors; including Russ Nigus, LeRoy Heinen, Gale McNemee, Bill Ostrander, and Norm Vanderslice. Nigus and Heinen received several post-season appraisals. LeRoy was given honorable mention on the All-Northeast Kansas Team and was first team selection on the All-Area Team of the Atchison Globe. Russ also received honorable mention on the All-Northeast Kansas squad and was a second team member of the Globe team.

Gale McNemee and Bill Ostrander were both first year men on the Midway gridiron; but, both were invaluable contributors to our football forces. Norm Vanderslice served an unheralded role, but was highly regarded as he filled several gaps in the Midway line as a utility man.

The story cannot be complete without mention of the underclassmen - the fellows who work hard day after day and receive little or no acclaim. Without these, no football team could be built. Our team was what could be called an underclass team, because it was comprised of mainly freshmen, sophomores and juniors.

ROBINSON FARMER'S UNION CO-OP. ASS'N.
Leona, Highland, Robinson



Co-Captains

14	Horton	0
0	Troy	6
33	Everest	6
33	Elwood	0
13	Centralia	28
14	Highland	21
18	Wathena	0
36	Robinson	0



Backfield



Boys' Basketball "A" Team



G. McNemee, B. Miller, J. Joyce, B. Ostrander, E. Libel, G. Laverentz, B. Meidinger, B. Keebler, T. Turpin, R. Nigus, Coach Thurlow.



COACH WILLIAM THURLOW

THE BANK OF DENTON

An eager group of Eagles reported for basketball practice in November faced with the toughest schedule in Midway history.

The Eagles won nine games in a row before losing to the Troy Trojans at Troy. They went on and finished the season with a 15-5 won-lost record. In compiling the excellent record, the Eagles won the K-36 league championship for the fourth straight year.

Perhaps the high point of the season was when Coach Thurlow's inspired Eagles beat Highland for the conference title. Tom Turpin, a senior, scored 44 points to lead the Eagles to victory.

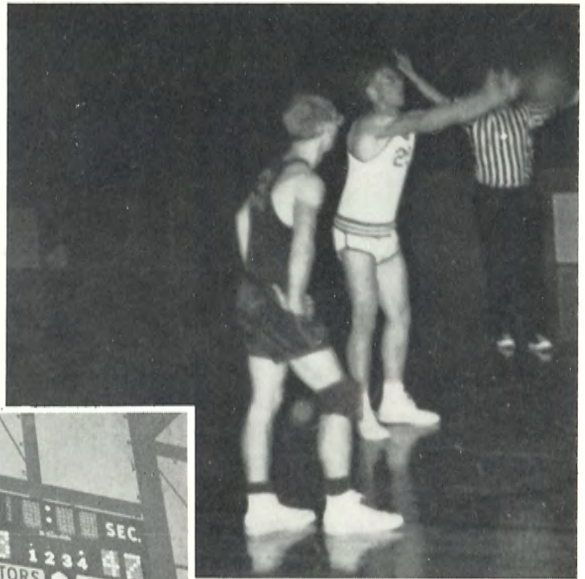
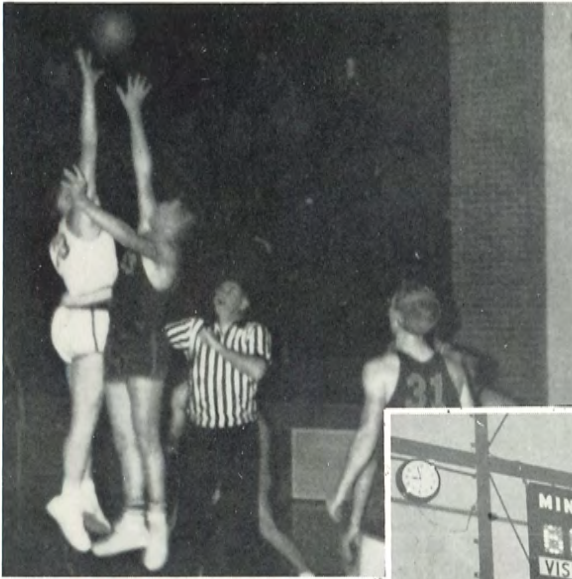
A word of thanks from the squad and coaches to everyone that helped make this season a successful one.

"B" Team Bombers

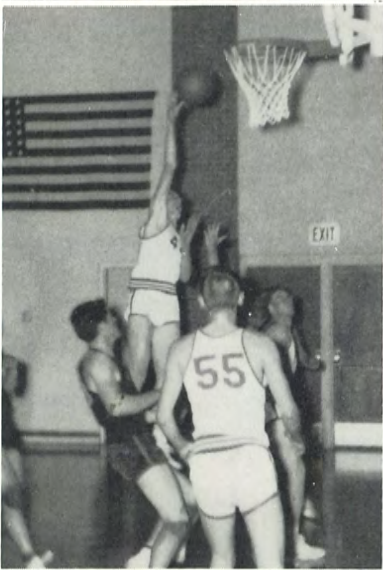


FIRST ROW: T. George, D. Godfrey, J. Bottiger, B. Denton, P. Boos, R. Gormley, M. Matthais. SECOND ROW: Coach Thurlow, T. Bottiger, J. Severin, J. Libel, F. Long, R. Tilbury, J. Soden, Coach Lee.





MIDWAY 1/27 Highland



Track



FIRST ROW: R. Anderson, G. McNemee, J. Bottiger, B. Miller, E. Libel, J. Joyce, B. Meidinger, B. Ostrander, D. Herpich. SECOND ROW: Coach Thurlow, M. Matthias, F. Long, J. Libel, B. Keebler, B. Denton, T. Turpin, J. Meredith, T. Bottiger, M. Schuetz, S. Libel, Coach Lee. THIRD ROW: L. Rowland, J. Ricklefs, F. Peuker, B. Pauly, A. Miner, R. Gormley, D. Godfrey, F. Miller, J. Soden.

QUALIFIERS FOR THE STATE MEET

Midway had a very successful track season this spring. The team placed second in the K-36 League Meet this year.

The Mile and 880 Yard Relay Team also won many honors this spring. The team won these events at the Hiawatha Relays, and also set meet records for these relays. The team also set school records in these events.

Midway boys won medals at all the medal meets in which the team participated, with the exception of the State Indoor Meet.

This spring Midway boys set seven school records. This is probably the most records set in one season in the school's history. The four boys at right participated in the State Meet this spring.



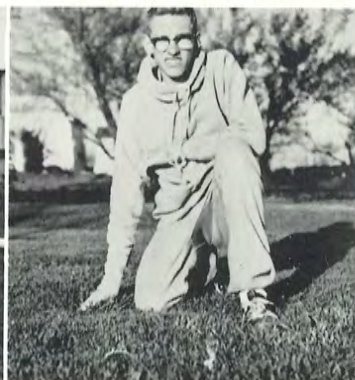
TOM - Broad Jump

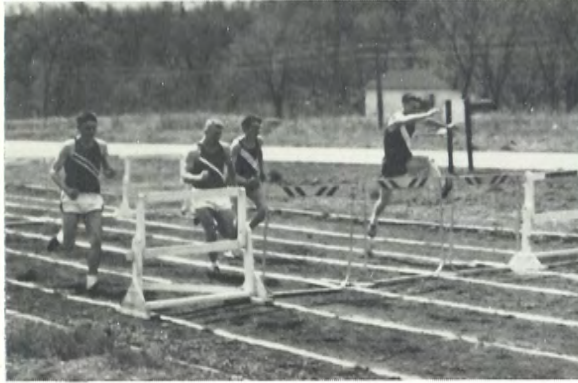


BOB - High Jump

BILL - Pole Vault

DICK - Mile Run





A close race!!!!

Boos warms-up



Up and over . . .

440 yard medalist



THE MILE AND 880 RELAY TEAM - Tom Turpin, Bob Miller, Eddie Libel, Jerry Bottiger

Minutes of the First Year
October 1947

The first Student Council meeting was held on the fifteenth period in the auditorium at the home of Mr. Purley. Since there were no votes, the secretary then called the roll.

After this, Mr. Barrett spoke to the council. The Student Council is a representative governing body. The council we have now was reorganized in 1947. He also spoke of the council that they were not to be a good council to have a good school.

Our new sponsor, Mr. Gavin, spoke to the council. He suggested that we elect a parliamentarian in order. Mr. Gavin also gave some rules on procedure.

Carol Moody moved that we elect a parliamentarian. It was voted upon and the motion carried. Darw Butcher Kelly, and Carol Moody were nominated. Carol Moody was elected parliamentarian.

Carol Moody then moved that the council elect a public Swain Adams seconded the motion. The motion carried. Dossie Lee Kingston, and Peggy Barnett were nominated. Carol Moody moved that nominations cease and Frank Gee seconded the motion. The council voted and Jo Ann Smith was elected president.

The next business taken up was a letter from Knott High School requesting the Union High School students to meet in an assembly at Knott High School sometime during the year. Carol Moody made the motion that we arrange to have an assembly for this school year. The motion was carried. Swain Adams then made the motion that the council work up some exchange as a result of the assembly. The motion was carried. The council voted and Betty Ann to work on the exchange.

The secretary then read the letter from the Knott High School. The letter was read and the council discussed it. The council then voted to have an assembly at Knott High School. The motion was carried. Carol Moody then made the motion that the council work up some exchange as a result of the assembly. The motion was carried. The council voted and Betty Ann to work on the exchange.

Organizations

"Stuco"



SEATED, left to right: Paul Boos; Mary Lou Gormley, secretary; Bruce Denton, vice-president; Linda Denton, president; Gale McNemee; Wilma Jean Myre, reporter; Mrs. Noble, sponsor.
STANDING, left to right: Vicki Weingart; Gene Laverentz; Tom Turpin; Bob Tilbury; Dolores Diebolt.



Through much hard work and cooperation, this year's council has been very active in all school functions. The council wishes to express their thanks to Mrs. Noble for being their sponsor, and helping them in all their projects.

Sponsored by
SWIFT & HENRY, St. Joseph

Council Project



"Stuco" Conference





FIRST ROW: M. Diebolt, M. Gormley, D. Diebolt, L. Denton, D. Diebolt, J. Franklin, F. Neal, A. Gronniger. SECOND ROW: Mr. Short, L. Kessinger, S. Nesbitt, P. Weingart, D. Cluck, M. Schuëtz, J. Urban, G. Gronniger, D. Herpich, R. Sexton, K. Ptomey, W. Myre, Mr. Compton.

Photography Club



Playful Girls



FIRST ROW: S. Nesbitt, S. Sexton, C. Ruch, V. Fulk, V. Weingart, L. Denton, M. Staudenmaier, J. Franklin. - SECOND ROW: M. Diebolt, B. Helmstetter, K. Ptomey, P. Ricklefs, L. George, M. Ricklefs, H. Turpin, F. Neal, Miss Watkins. THIRD ROW: M. Gormley, D. Diebolt, C. Laverentz, L. Long, M. Jones, D. Diebolt, K. Libel, S. Staudenmaier, L. Kessinger.



"M" Club

Girls' M-Club is a new organization. The purpose of this club is to make points and earn a letter. In order to earn a letter a girl must have 200 points. The club consists of a board of directors, president, vice-president, and secretary-treasurer.

President - Frances Neal

Vice-Pres. - Linda
Kessinger

Sec. -Treas. - Diann
Diebolt

Sponsored by
TIBBETS MORTUARY, Troy
CRAWFORD'S POULTRY MARKET
Atchison



FIRST ROW: G. McNemee, D. Herpich, B. Ostrander - Treas. , R. Nigus - Pres. , L. Heinen - V. -Pres. , N. Vanderslice, M. Schoenfelder, B. Tilbury. SECOND ROW: Coach Lee, J. Urban, B. Denton, T. Turpin - Sec. , E. Libel, G. Laverentz, D. Ricklefs, J. Bottiger, Coach Thurlow. THIRD ROW: J. Joyce, R. Anderson, B. Miller, P. Boos, D. Godfrey, T. George.

Big "M" Lettermen

Sponsored by a FRIEND

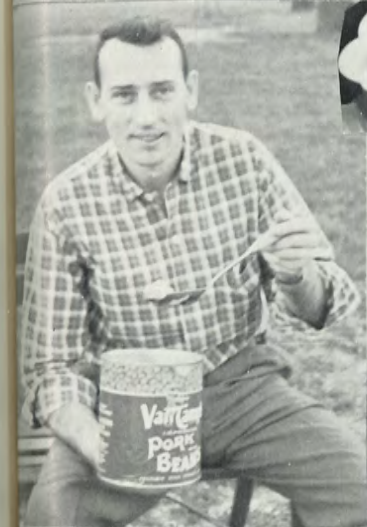


Pep Club



FIRST ROW: W. Myre, S. Staudenmaier, V. Fulk, M. Gormley, P. McNemee, L. Long, L. Simmons, J. Moore, H. Turpin, M. Urban. SECOND ROW: C. Laverentz, M. Jones, V. Weingart, L. Denton, D. Diebolt, S. Nesbitt, K. Ptomey, D. Diebolt, M. Ricklefs, J. Franklin. THIRD ROW: H. T. McCoole (Sponsor), L. Rowland, M. Diebolt, L. Kessinger, S. Tilbury, J. Holzhey, M. Staudenmaier, C. Ruch, E. Meinardus, C. Ruhnke, S. Hartman, W. Matthias, F. Neal, J. Frump, M. Weingart, S. Libel. FOURTH ROW: B. Libel, L. Haupt, B. Helmstetter, K. Libel, J. Meredith, F. Peuker, P. Ricklefs, B. Hartman, A. Miner, R. Sexton, L. George, M. Schoenfelder, A. Foster, L. Myers.







Alumni

1954

Thomas Burke
Atchison, Kansas

Nancy Caudle Laverentz
15119 Larch Ave.
Lawndale, Calif.

Lawrence Colley
Severance, Kansas

Ruth Coufal Van Noda
3533 1/2 St. Joseph Ave.
St. Joseph, Mo.

John Karn
1125 Parallel
Atchison, Kan.

Barbara Larson Laughman
S. Wayne St.
Arlington, Va.

Donald Meng
Bendena, Kan.

Arnold Miller
Bendena, Kansas

Patricia B. Carpenter
Valley, Nebraska

Joan Frump Farr
Horton, Kansas

John Herpich
Troy, Kansas

John Spaight
611 Santa Fe
Atchison, Kansas

Larry Winchester
Denton, Kansas

Gene Rush
Severance, Kansas

Willis Potter
Severance, Kansas

Donna Fuhrman Davis
Elliot, Iowa

Gary Martin
R.R. 4
Atchison, Kansas

1955

Wayne Cluck
Bendena, Kansas

Gary Godfrey
Bendena, Kansas

Alfred Miller
Bendena, Kansas

Evelyn Myers Berry
Omaha, Nebraska

Milton Saltzman
Troy, Kansas

Edward Swinford
Bendena, Kansas

James Berry
Bendena, Kansas

Nolan Ellsworth
2308 S. 14th
St. Joseph, Mo.

Joan Hammersmark Luthro
833 E. 6th
Emporia, Kansas

Charlene H. Winchester
Denton, Kansas

Janet Herpich Schiebe
Admire, Kansas

Mary Spaight Buzard
2120 Winslow Dr., Apt. 5
Columbus 7, Ohio

Ruth Staudenmaier Karn
1125 Parallel
Atchison, Kansas

Marilyn Ricklefs
1269 Van Buren
Topeka, Kansas

1956

Clifford Carpenter
Valley, Nebraska

Karen Ellsworth Flynn
c/o Ath. Dept.
Manhattan, Kansas

Vera Frakes
1158 Hillsdale
Topeka, Kansas

Joan Jamvold Keith
1137 Akron
Aurora, Colorado

LeRoy Jamvold
Troy, Kansas

Christina M. Kistler
1237 Kansas Ave.
Atchison, Kansas

Henry Matthias
Denton, Kansas

Dale Miller
Severance, Kansas

Mary Berry Carnahan

Francis Foley
Bendena, Kansas

John H. Johnson
R.R. 2
Atchison, Kansas

Larry Laverentz
Bendena, Kansas

Melvin Miller
933 McVicar
Topeka, Kansas

Fred Moore
605 Independence
St. Joseph, Mo.

Robert Myers
Bendena, Kansas

Naomi Ricklefs
Bendena, Kansas

Patricia Peters Olson
Willis, Kansas

Sally Kerr Rush
Severance, Kansas

Helen Neal Grosfield
Willis, Kansas

Phillip Roland
Augusta, Kansas

1957

Robert Meng
Troy, Kansas

Charles Miller
1034 Elizabeth
Liberty, Mo.

JoAnn Miller
Box 21
Rushville, Mo.

Larry Redmond
Bendena, Kansas

Ruthanna R. Seward
Albany, Mo.

Norma Jean S. Berry
Doniphan, Kansas

Keith George
Severance, Kan.

Stephen Higgins
Platte City, Mo.

Lee Ricklefs
Severance, Kansas

John Coufal
Bendena, Kansas

Mary Linn D. Johnson
Bendena, Kansas

Liane Ellsworth Harris
1921 1/2 Faron
St. Joseph, Mo.

Anna Mae Halling
Huron, Kansas

Marvin Miller
Atchison, Kansas

Leo Soyland
Denton, Kansas

Paul Halling
Hiawatha, Kansas

1958

Dorothy Libel
Leona, Kansas

Clinton Lambert
Leona, Kansas

John Anderson
Trimble, Mo.

Pearl Hill Rice
Muscotah, Kansas

John Joyce
Denton, Kansas

Hilda Meinardua Ehlers
3707 Holmes
Kansas City, Mo.

Jerome Nimz
Denton, Kansas

Jim Pauly
20 E. 32nd Terrace
Kansas City, Mo.

Dennis Winchester
Denton, Kansas

Mildred B. Atkins
Leona, Kansas

Eddie Brassfield
206 1/2 Oregon St.
Hiawatha, Kansas

Wilfred Gildersleeve
Severance, Kansas

Jerry Peters
Denton, Kansas

Roger Caudie
R. R. 3
Troy, Kansas

Connie Cluck
Bendena, Kansas

James Foster
Bendena, Kansas

Marilyn Johnson
604 N. 11th
St. Joseph, Mo.

Lu Etta Colley McKey
315 S. Third
Hiawatha, Kansas

Carol Keling
6007 Pryar
St. Joseph, Mo.

Ronnie Myers
Bendena, Kansas

Janice Ricklefs
Carder Hall
9th Faron St.
St. Joseph, Mo.

1959

Fred Knecht
Leona, Kansas

Jim Meidinger
Leona, Kansas

Deanna Schoenfelder
Leona, Kansas

Connie Lambert Riley
Tarkio, Mo.

Larry Ptomey
Leona, Kansas

Betty Pauly
210 N. 8th Mertland
St. Joseph, Mo.

Sharon Rader
821 Kansas Avenue
Atchison, Kansas

Kenneth Jamvold
Denton, Kansas

Gerry Ellsworth
2 North 12th
Kansas City, Kansas

Jon Denton
Denton, Kansas

Marion Barrow
Denton, Kansas

Marcille F. Hanlan
Troy, Kansas

Larry Morris
622 N. Chestnut
McPherson, Kansas

Bill Long
Severance, Kansas

David Higgins
Severance, Kansas

1960

Mike Libel
Leona, Kansas

Phyllis Ditzfeld Mason
Leona, Kansas

Vicky Keebler Peters
Denton, Kansas

Jim Bottiger
Denton, Kansas

John Ricklefs
Severance, Kansas

Don Miller
Bendena, Kansas

Donna Ricklefs
Bendena, Kansas

Mary Karn
Bendena, Kansas

Jerry Pinkston
Huron, Kansas

Jim Severin
c/o Ellis Elsom
Buffalo, Wyoming

Diane Fulk
2 North 12th
Kansas City, Kansas

Catherine Matthias
1019 Kansas Ave.
Atchison, Kansas

Eileen Hoffman
Denton, Kansas

Rosetta Gronniger
Denton, Kansas

Frances Ricklefs
1019 Kansas Ave.
Atchison, Kansas

Isaac Chase
Severance, Kansas

Loree George
510 Garfield
Topeka, Kansas

Sue Keling Peters
817 Sunset Drive
St. Joseph, Mo.

Lois Redmond
Bendena, Kansas

Larry Tilbury
Bendena, Kansas

Earl Williams
Bendena, Kansas

Judy Holzhey
Bendena, Kansas

Joe Haupt
R. R. 4
Atchison, Kansas

Gerald Myers
Denton, Kansas

1961

Linda Denton
Denton, Kansas

Dolores Diebolt
Denton, Kansas

LeRoy Heinen
Denton, Kansas

Dick Herpich
Denton, Kansas

Norman Vanderslice
Denton, Kansas

Sharon Sexton
Denton, Kansas

Virginia Fulk
St. Joseph, Mo.

Tom Turpin
Troy, Kansas

Gale McNemee
Troy, Kansas

Gale McNemee
Troy, Kansas

Sarah Staudenmaier
Bendena, Kansas

Robert Tilbury
Bendena, Kansas

Neale Ellsworth
Denton, Kansas

Ware Sterne
Severance, Kansas

John Libel
Severance, Kansas

Russ Nigus
Leona, Kansas

Lydia Manthe
Denton, Kansas

Barbara Libel
Leona, Kansas

Donna Hartman
Leona, Kansas

Connie Ruhnke
Severance, Kansas

Ronnie Godfrey
Bendena, Kansas

Bill Ostrander
Galesburg, Illinois

Melvin Schoenfelder
Leona, Kansas

Friends and Advertisers

ATCHISON

Runyan's
Ramsay's
Rudolph's
Stanton's
Seeger Agency
Bush Appliance
Main Street Bowl
Waisner & Shelver
Intfen Furniture Co.
Schmierer's Drug Store
The City National Bank
Charlotte's Flower & Gift Shop
Tonsing's Stationery & Book Store
Commerce Saving & Loan Association

BENDENA

Tilbury Truck Line

HIGHLAND

Jayhawk Cafe
Boos Appliance
College Inn Cafe
Don's Barber Shop
Ukena Hardware Co.
Farmer's State Bank
Highland Lumber Co.
Sutherland Printing Co.
Royal Blue Super Market
Verda Glee's Beauty Shop

SEVERANCE

Roland's General Store
Pink Rose Beauty Salon
Berenice's Beauty Shoppe

DENTON

Emerson Yoder
C. H. Gish Co.
Retter's Pharmacy
Winchester Grain Co.
Rosemary's Beauty Shop
Kessler Auto & Electric

LEONA

Davis Cafe
Moore's Market
Farmers Bank of Leona

ST. JOSEPH

The Vogue
Hund & Eger
Victory Cafe
Strathman Studio
Ross-Frazer Supply Co.
Missouri Livestock Com.

TROY

Martin Cleaners
Brown Chevrolet
Robert A. Reeder
Dr. Leo F. Paulich
First National Bank
Winzer Hardware Co.
Doniphan County Equipment

WATHENA

Wathena Times
"Swede" Axland
Riley's Hy-Klas Store
The Farmers' State Bank

