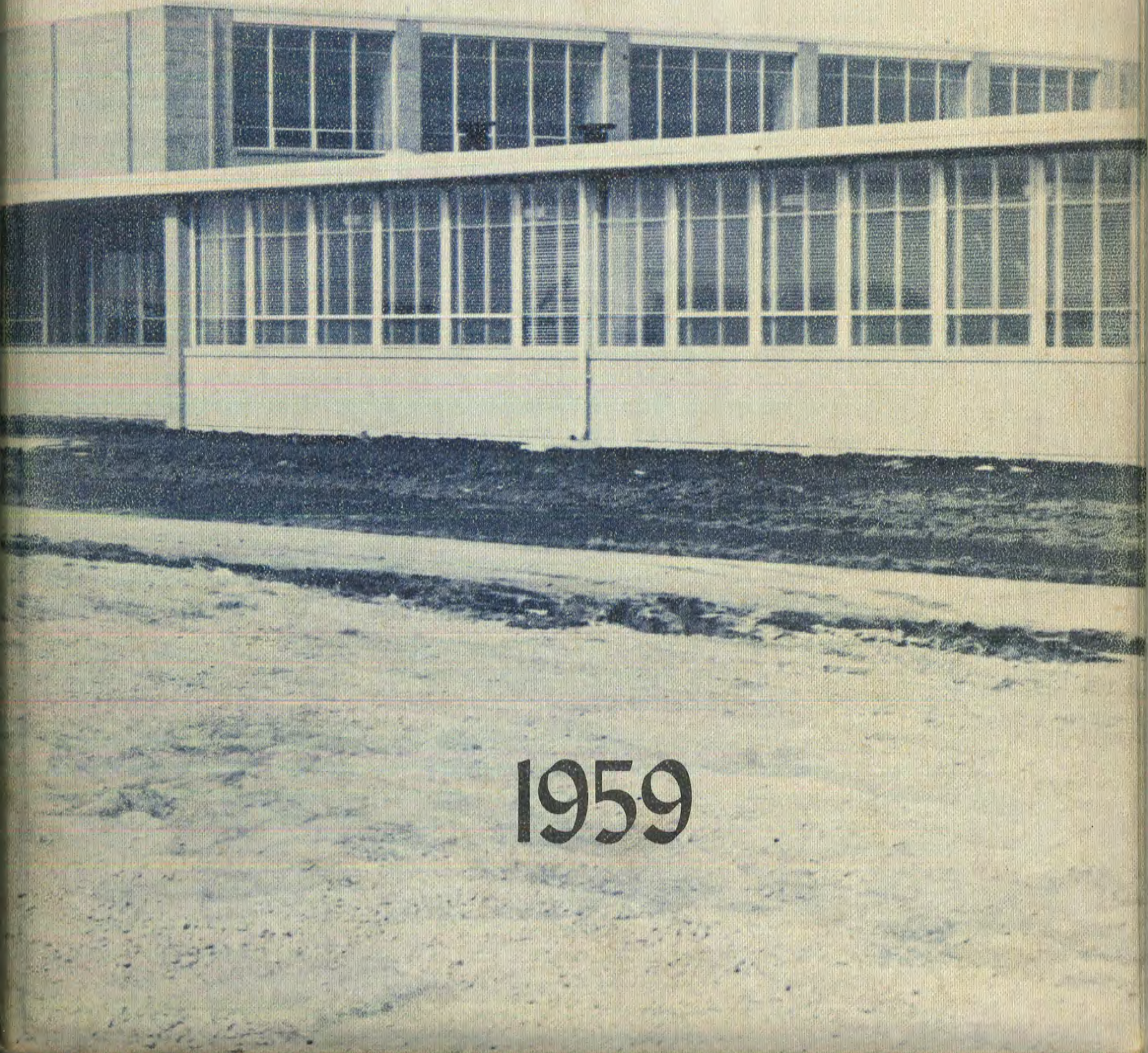
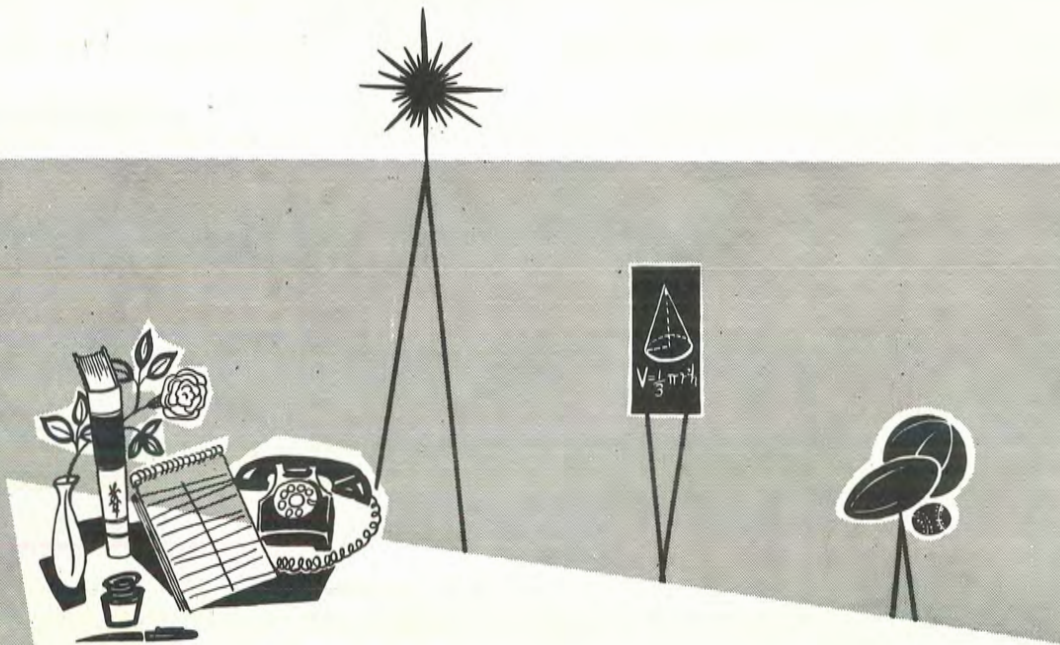


# THE EAGLE



1959





MIDWAY HIGH SCHOOL

Denton, Kansas

# The Eagle

Sharon Rader





# Dedication

We take great pleasure in dedicating this, our 1958-'59 edition of the Eagle, to our parents:

Who have strived toward developing us into useful citizens, who will be a credit to our community and country; whose wishes are that each of our lives will be dedicated to God.

Who have made unselfish sacrifices in making our school an instrument in preparing us for leaders of tomorrow.

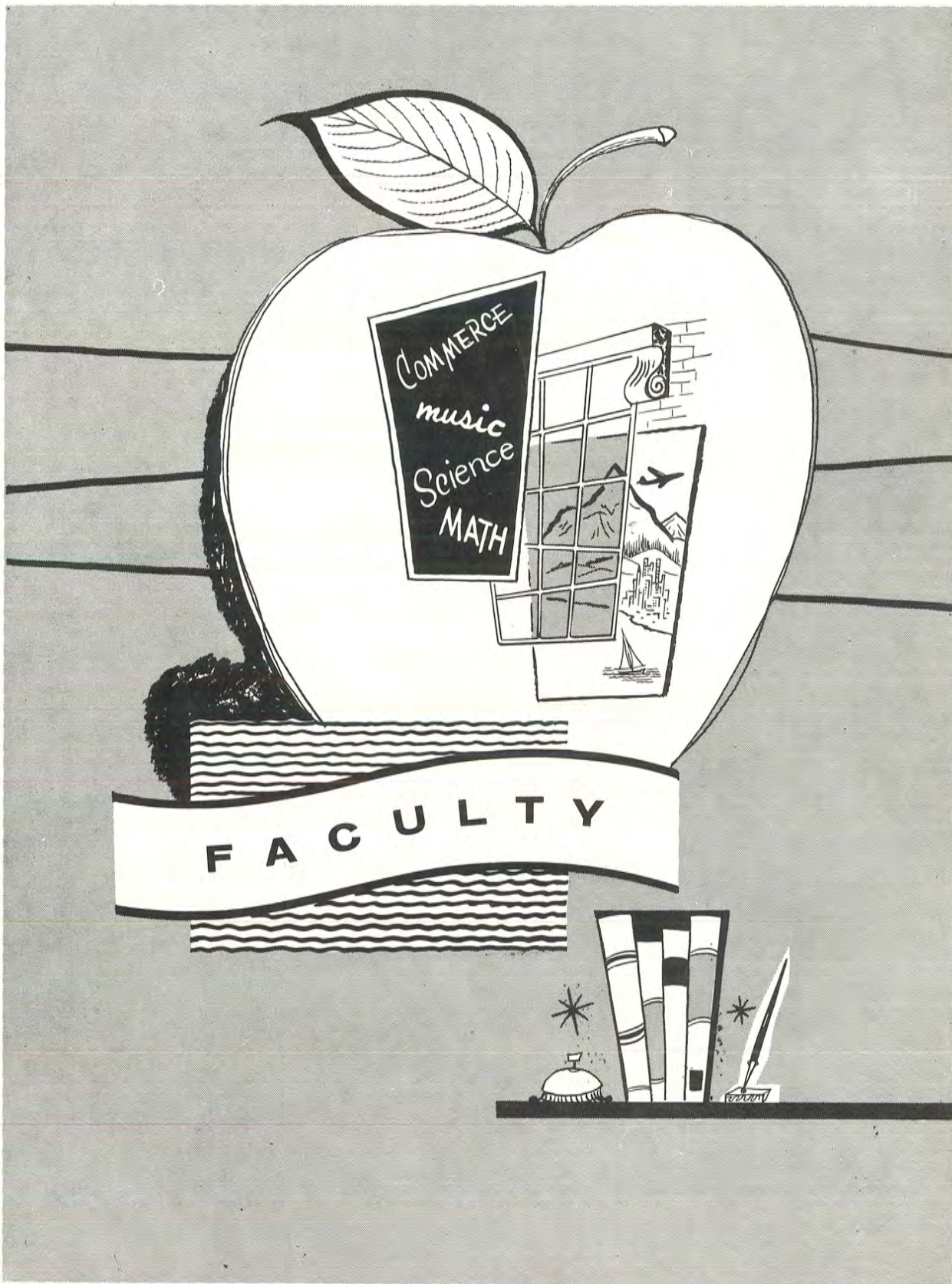
Who took time to doctor our cuts and bruises, and gave us words of comfort and encouragement.

Whose love has never failed in all our past years and will not fail us in years to come.

We hereby dedicate this edition of the Eagle to you, Our Parents.

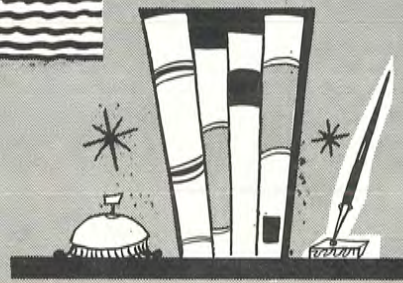






COMMERCE  
music  
Science  
MATH

FACULTY







FRONT ROW: Miss Shirley Bay, Junior Class Sponsor; Mrs. Greta Pry, Pep Club Sponsor; Mrs. Rachel Noble, Student Council Sponsor; Miss Sharon Watkins, Freshman Class Sponsor. BACK ROW: Mr. Charles Short,

Principal; Mr. William Thurlow, Sophomore Class Sponsor; Mr. Manley Vance, Senior Class Sponsor; Mr. Thomas J. Burke, Vice-Principal.

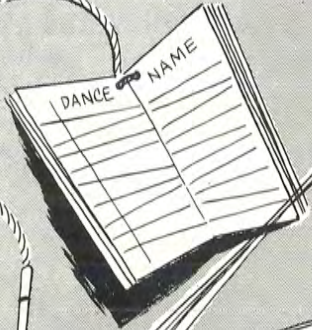
## Student Council



SEATED: Francis Neal, John Ricklefs, Vice-President; Sharon Rader, President; Mary Karn, Secretary-

Treasurer; Sarah Staudenmaier. STANDING: LeRoy Heinen, Steve Rader, Jon Denton, Mrs. Noble, Sponsor.

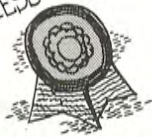




This certifies that our  
**GRADUATES**

have successfully completed  
their courses and are now  
prepared to meet their  
future with

**JOY AND HAPPINESS**





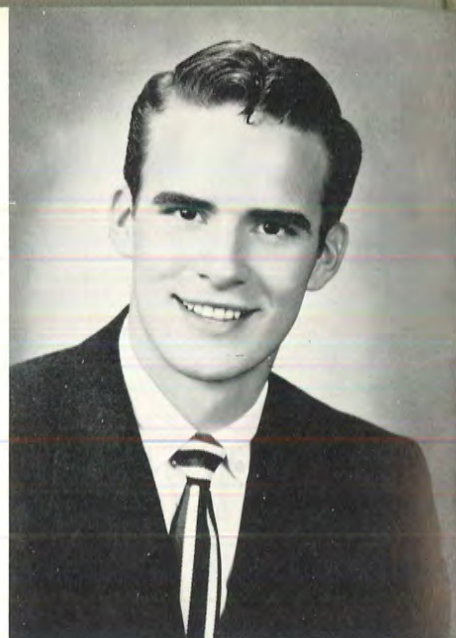


BETTY PAULY

Pep Club . . . . . 1,2,3,4  
 Class President . . . . . 2,4  
 Class Vice-President . . . . . 3  
 Student Council Secretary . . . . . 4  
 Glee Club . . . . . 1,3,4  
 Play Cast . . . . . 3,4  
 Homecoming Queen . . . . . 3  
 Apple Blossom Candidate . . . . . 3  
 Cheerleader . . . . . 2,3,4  
 Basketball . . . . . 1,2,3,4  
 School Paper Artist . . . . . 4  
 Advertising Editor of Annual . . . . . 4

FRED KNECHT

Basketball . . . . . 1,2,3,4  
 Football . . . . . 3,4  
 Softball . . . . . 1,2,3  
 Track . . . . . 3  
 Class President . . . . . 2  
 Class Vice-President . . . . . 4  
 Letterman's Club . . . . . 3,4  
 Play Cast . . . . . 3,4  
 Sports' Editor of Annual . . . . . 4  
 Co-Editor School Paper . . . . . 4



DAVID HIGGINS

Basketball . . . . . 1,2,3,4  
 Track . . . . . 1,2,3,4  
 Football . . . . . 3,4  
 Softball . . . . . 1,2,3  
 Letterman's Club . . . . . 1,2,3,4  
 Letterman's Club Vice-President . . . . . 4  
 Class President . . . . . 1  
 Class Treasurer . . . . . 4  
 Play Cast . . . . . 3  
 Business Manager of Annual . . . . . 4  
 Commencement Speaker . . . . . 3



SHARON RADER

Pep Club . . . . . 1,2,3,4  
 Cheerleader . . . . . 2,3,4  
 Class Secretary . . . . . 1  
 Class Treasurer . . . . . 2,3  
 Student Council President . . . . . 4  
 Basketball . . . . . 1,2,3,4  
 Band . . . . . 1,3  
 Glee Club . . . . . 1  
 Homecoming Candidate . . . . . 3,4  
 Play Cast . . . . . 2,3  
 Editor of Annual . . . . . 4



JIM MEIDINGER

Basketball . . . . . 1,2,3,4  
 Football . . . . . 3,4  
 Track . . . . . 2,3,4  
 Softball . . . . . 1,2,3  
 Letterman's Club . . . . . 3,4  
 Letterman's Club Reporter . . . . . 4  
 Class Vice-President . . . . . 2  
 Play Cast . . . . . 1,3,4





DEANNA SCHOENFELDER  
 Pep Club . . . . . 1,2,3,4  
 Pep Club Vice-President . . . . . 2,3  
 Pep Club President . . . . . 4  
 Glee Club . . . . . 1,2,3  
 Play Cast . . . . . 2,3,4  
 Basketball . . . . . 1  
 Band . . . . . 2,3  
 Class Reporter . . . . . 1,4  
 Annual Photographer . . . . . 4  
 Co-Editor School Paper . . . . . 4  
 Apple Blossom Candidate . . . . . 4



JON DENTON  
 Basketball . . . . . 1,2,3,4  
 Football . . . . . 3,4  
 Track . . . . . 1,2,3,4  
 Softball . . . . . 1,2,3  
 Letterman's Club . . . . . 1,2,3,4  
 Letterman's Club President . . . . . 4  
 Play Cast . . . . . 1,3  
 Class Vice-President . . . . . 1  
 Student Council . . . . . 4  
 Band . . . . . 1



KENNETH JAMVOLD  
 Track . . . . . 3  
 Play Cast . . . . . 3



GERRY ELLSWORTH  
 Pep Club . . . . . 1,2,3,4  
 Pep Club Secretary . . . . . 3  
 Cheerleader . . . . . 4  
 Class Secretary . . . . . 3,4  
 Class Treasurer . . . . . 1  
 Glee Club . . . . . 1,3,4  
 Play Cast . . . . . 3,4  
 Basketball . . . . . 1,2  
 Eagle Staff . . . . . 4  
 Commencement Speaker . . . . . 4



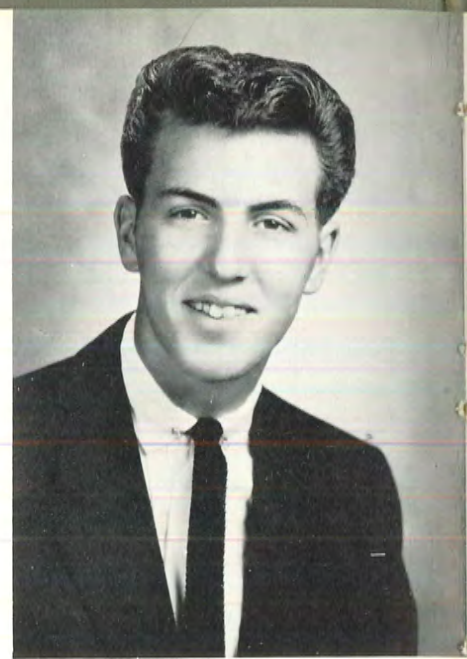
BILL LONG  
 Basketball . . . . . 1,2,3,4  
 Football . . . . . 3,4  
 Track . . . . . 1,2,3,4  
 Softball . . . . . 1,2,3  
 Play Cast . . . . . 1,3,4  
 Sport's Editor School Paper . . . . . 4  
 Letterman's Club . . . . . 3,4





CONNIE LAMBERT

Glee Club . . . . . 1,2,3  
 Pep Club . . . . . 1,2,3,4  
 Class Secretary . . . . . 1  
 Class Reporter . . . . . 2  
 Pep Club Vice-President . . . . . 3  
 Play Cast . . . . . 3



LARRY NORRIS

Basketball . . . . . 1,3  
 Football . . . . . 1,3,4  
 Track . . . . . 1  
 Mixed Chorus . . . . . 1,3  
 Boys' Chorus . . . . . 1,3  
 Band . . . . . 1,2,3,4  
 Class Reporter . . . . . 3  
 Class Vice-President . . . . . 3



MARION BARROW

Basketball . . . . . 1  
 Baseball . . . . . 1  
 Track . . . . . 3,4  
 Letterman's Club . . . . . 3,4  
 Class Secretary . . . . . 2  
 Stage Manager . . . . . 3



MARCILLE FRANKLIN

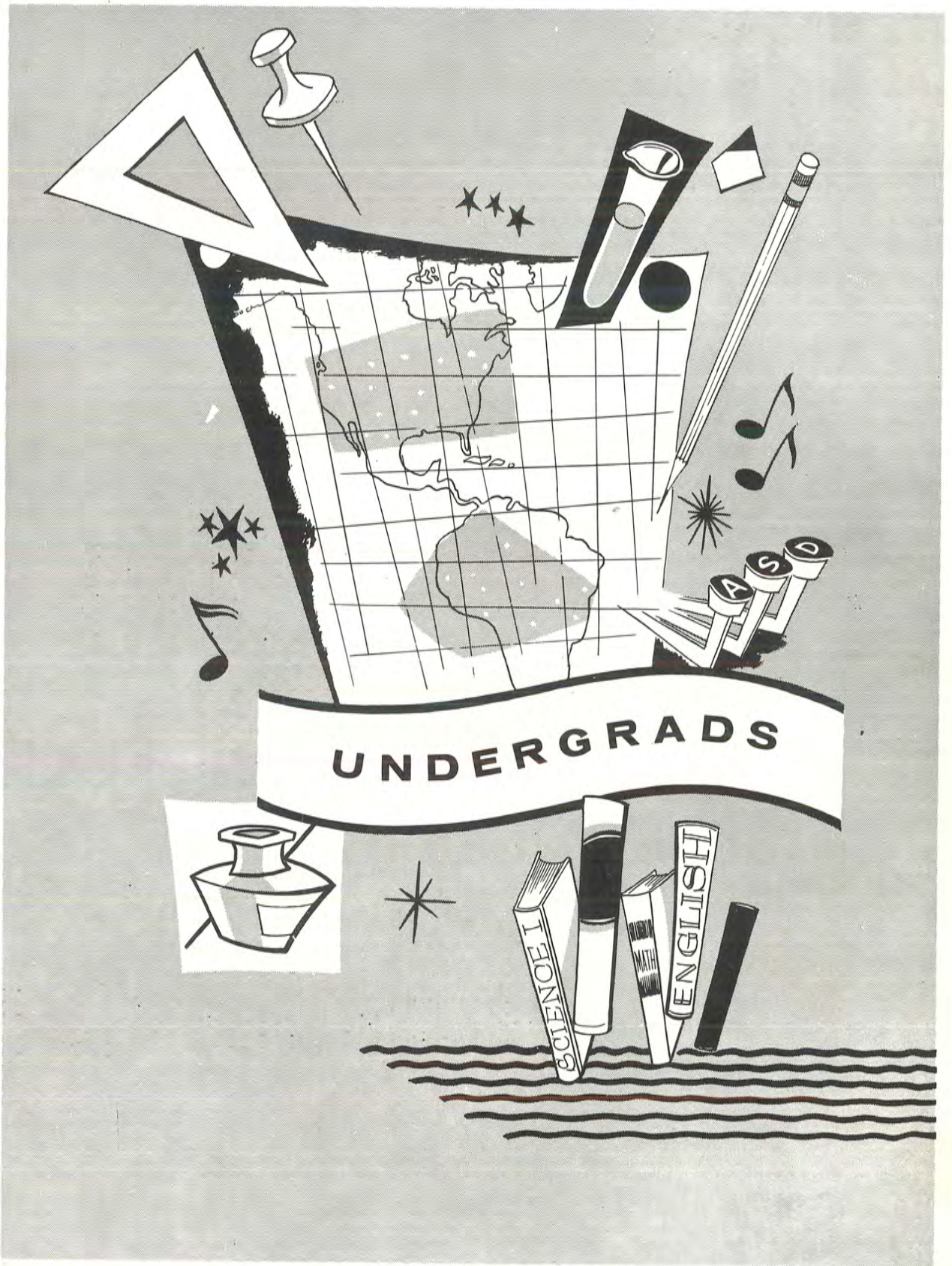
Pep Club . . . . . 1,2,3,4  
 Pep Club Treasurer . . . . . 3  
 Pep Club Reporter . . . . . 4  
 Class Reporter . . . . . 1  
 Band . . . . . 1,3,4  
 Glee Club . . . . . 1,2,3  
 Mixed Chorus . . . . . 4  
 Play Cast . . . . . 3  
 Basketball . . . . . 1,2,3,4  
 Annual Photographer . . . . . 4



LARRY PTOMEY

Track . . . . . 1,2,3,4  
 Football . . . . . 1,2  
 Basketball . . . . . 1,2  
 Softball . . . . . 1,2,3  
 Class President . . . . . 1  
 Class Treasurer . . . . . 2  
 Glee Club . . . . . 1,2  
 Play Cast . . . . . 3,4









EARL WILLIAMS  
President



CATHERINE MATHIAS  
Vice-President



DONNA RICKLEFS  
Secretary



JOHN RICKLEFS  
Treasurer

J  
U  
N  
I  
O  
R  
S



LOIS REDMOND



ISAAC CHASE



LARRY TILBURY



JUDY HOLZHEY



DON MILLER



PHYLLIS DITZFELD



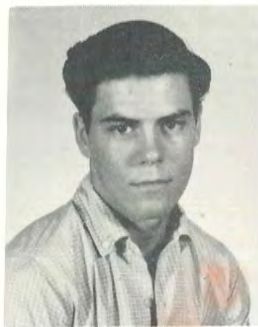
FRANCES RICKLEFS



JIM BOTTIGER



VICKY KEEBLER



GARY MORRIS



MARY KARN



MIKE LIBEL



DIANE FULK

ROSETTA GRONNIGER

JERRY PINKSTON

SUE KELING

LOREE GEORGE

JIM SEVERIN

EILEEN HOFFMAN







JOHNNIE  
LIBEL  
President



RUTH  
LONG  
Vice-President



TOM  
TURPIN



LINDA  
DENTON  
Secretary



GALE  
McNEMEE  
Treasurer



SARAH  
STAUDENMAIER



MELVIN  
SCHOENFELDER



RONNIE  
GODFREY



BARBARA  
LIBEL



DICK  
HERPICH



LYDIA  
MANTHE



NORMAN  
VANDERSLICE



DONNA  
HARTMAN



EUGENE  
RUHNKE



DELORES  
DIEBOLT



RUSS  
NIGUS



LEROY  
HEINEN



VIRGINIA  
FULK



JERRY  
PLATT

# SOPHOMORES

BOB  
TILBURY







DENNIS  
RICKLEFS  
President



CHARLIE  
PTOMEY  
Vice-President



MARY JANE  
WEINGART  
Secretary



TOM  
GEORGE  
Treasurer

## FRESHMEN



STEVE  
RADER



JIM  
URBAN



SUSAN  
BOOS



SHARON  
NESBITT



RICHARD  
ANDERSON



DARREL  
CLUCK



DEAN  
SIMPSON



LINDA  
KESSINGER



JANE  
MOORE





WILMA JEAN  
MYRE



GARY  
GRONNIGER



DON  
McNETT



GENE  
SIMPSON



MARILYN  
SCHOENFELDER



MAURINE  
RICKLEFS



BILL  
McENULTY



BERNARD  
LIBEL



BRUCE  
DENTON



WILMA JEAN  
MATTHIAS



JUDY  
FRUMP



EDDIE  
LIBEL



HELEN  
TURPIN



ALAN  
NOCKS



SHIRLEY  
HARTMAN



JANICE  
FRANKLIN



FRANCES  
NEAL



# Initiation

## '58-'59



Having Trouble, Eddie?



Having Fun, Sharon?

He's Too Eager!



New Permanent, Bruce?



One Of Us Has To Dance With Her.

# Plays



Christmas Play Cast

K-36 League Play

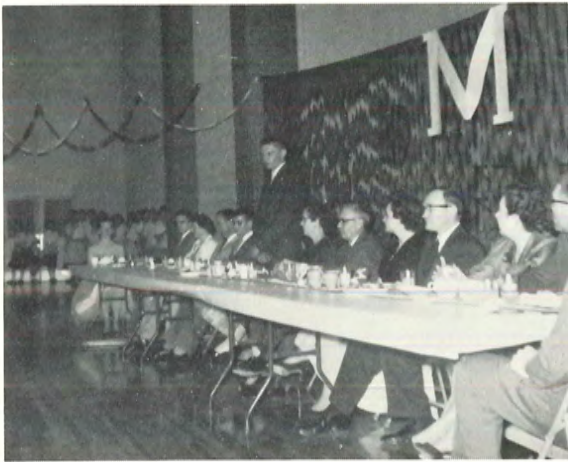
K-36 League Play



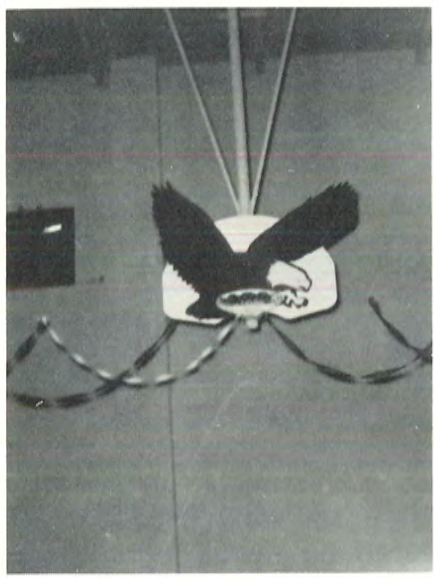








A  
T  
H  
L  
E  
T  
I  
C



B  
A  
N  
Q  
U  
E  
T



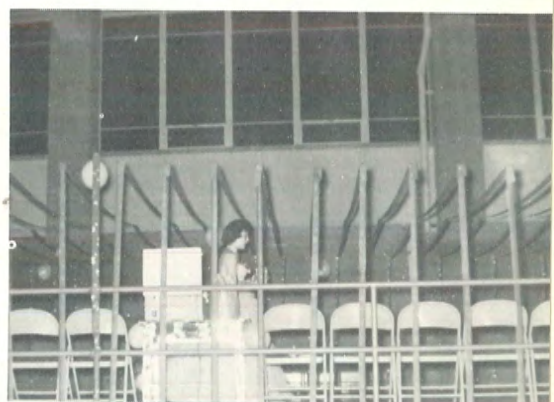




## Junior—Senior



## Banquet and Prom



## “Nuts and Bolts”







“Eagles” Pep Club



FIRST ROW: B. Libel, C. Lambert, F. Ricklefs, D. Schoenfelder, E. Hoffman, J. Holzhey, M. Libel. SECOND ROW: J. Haupt, D. Ricklefs, S. Staudenmaier, D. Diebolt, J. Frump, M. Ricklefs, M. Weingart, H. Turpin, M. Schoenfelder. THIRDRROW: L. George,

W. Myers, S. Nesbitt, R. Long, V. Fulk, M. Denton, L. Manthe, R. Gronniger, S. Boos, Mrs. Pry. LAST ROW: L. Kessinger, M. Franklin, M. Schoenfelder, C. Matthias, J. Moore, J. Franklin, F. Neal, W. Matthias.





The small but mighty Midway band added spirit and pep to many of our school athletic activities this year.



**Band:**

FIRST ROW: J. Eddy Libel, Alan Nocks, Susan Boos, Mike Libel, Judy Frump, Judy Holzhey, Wilma Myre, Gary Morris, Loree George. SECOND ROW: Bruce Denton, Dennis Ricklefs,

Larry Morris, Marcille Franklin, Miss Bay, Vicky Keebler, Tom George, Richard Anderson, Sharon Nesbitt, Johnny J. Libel.

The band and mixed chorus provided music to add to the Christmas spirit just before the holidays.





## "Glee Club"



BOTTOM ROW: L. Kessinger, S. Boos, S. Staudenmaier, J. Frump, M. Ricklefs, F. Neal, W. Matthias. TOP ROW: W. Myre, B. Pauly, R. Long, G. Ellsworth, V. Fulk, L. Denton, J. Franklin, L. George, V. Keebler, Miss Bay, Instructor.

## "Mixed Chorus"



FIRST ROW: D. Ricklefs, S. Nesbitt, M. Franklin, Maurine Ricklefs, W. Matthias, H. Turpin, M. Weingart. SECOND ROW: Miss Bay, W. Myre, L. Kessinger, D. Fulk, V. Fulk,

M. Schoenfelder, D. Diebolt, M. Karn. THIRD ROW: S. Keling, B. Libel, J. Haupt, E. Williams, L. Redmond.





**Mary Karn**  
**HOMECOMING QUEEN**





## HOMECOMING











Co-Captain  
Denton

# Football



Co-Captain  
Higgins



FIRST ROW: Tom George, Jerry PINKSTON, Jim Severin, Leroy Heinen, Richard Anderson, Melvin Schoenfelder. SECOND ROW: Russell Nigus, Jim Meidinger, Jon Denton, Dave Higgins, Larry Ptomey, John Ricklefs. THIRD ROW: Coach Vance, Steve Rader,

Fred Knecht, Jim Bottiger, Jerry Platt, Bill Long, Larry Tilbury, Coach Thurlow. TOP ROW: Earl Ricklefs, J. Eddy Libel, Bruce Denton, Dennis Ricklefs, Ronnie Godfrey.

An eager and hustling group of Eagles ushered in their second season of football with a rousing 21-7 victory over Elwood, the first football victory ever recorded in the Midway record book. The same high spirit and willingness to fight carried the inexperienced but enthusiastic Eagles to a commendable 5-2-1 season record. Perhaps the high point of the season was when Coach Vance's inspired Eagles fought the K-36 league champions to a tie. May this be the first of many successful seasons for Midway High.

19	Elwood	7
6	Troy	13
19	Everest	0
7	Shubert	19
6	Wathena	6
35	Highland	0
19	Robinson	0
35	Reserve	0





Watching Over Carefully



First And Ten



The Boys In-Action



Nice Tackle



Information Please



Might Be A First Down



Skin Your Nose  
Graduating Seniors



Our Team At Robinson  
Where's The Bal!



The Play Is Over Boys  
Hey Jon







K-36 League Champs . . . . . County Champs "A" . . . . .



# Baske

## SCHEDULE

63	Wathena	50
46	Fairview	41
41	Baileyville	46
70	Powhattan	42
62	Morrill	56
68	Robinson	46
80	Elwood	52
56	Powhattan	61
72	Willis	37
92	Troy	60
94	Everest	75
41	Maur Hill	51
62	Highland	36
101	Elwood	52
57	Maur Hill	61
97	Highland	44
<b>DONIPHAN COUNTY TOURNAMENT</b>		
50	Elwood	45
56	Wathena	52
<b>DISTRICT TOURNAMENT</b>		
61	Robinson	37
63	Wathena	55
<b>REGIONAL TOURNAMENT</b>		
40	St. Mary's	48



FIRST ROW: Coach Vance, Bill Long, J. Eddie Libel, Turpin, Jon Denton, Russell Nigus, John Ricklefs. THIRD Bottlger, Jim Meidinger.

Jon Going Up



Man To Man Defense



"B" Team In Action







"B" . . . . . District Champs . . . . . And On To Regionals

# tbball



Coach Thurlow. SECOND ROW: Dave Higgins, Tom  
ROW: Larry Tilbury, Jerry Platt, Fred Knecht, Jim



Everest Takes A Beating



Coach Gives Information  
Our Fine Guards

Fred With The Ball

Working Against A Zone







\*Indicates Lettermen

FIRST ROW: L. Tilbury, Heinen\*, Meidinger\*, Higgins\*, J. Ricklefs\*, Long\*, Severin, Turpin. SECOND ROW: Coach Vance, George, Barrow\*, Nigus\*, Platt, J. Denton\*, Bottiger\*, Herpich\*, D. Ricklefs, Libel, Coach Thurlow.

THIRD ROW: Ruhnke, Cluck, McNemea, Miller, B. Denton, Vanderslice, Rader, Urban, Schoenfelder, Anderson, Morris.

B-D League Champions; 2nd in K-36 League, 2nd County

# Track



Determination



Reach!

5:00.8



Flying Low



Over The Bar



Big Bill Hurdles  
He's Beat

Move Out



Heave Ho  
John-O

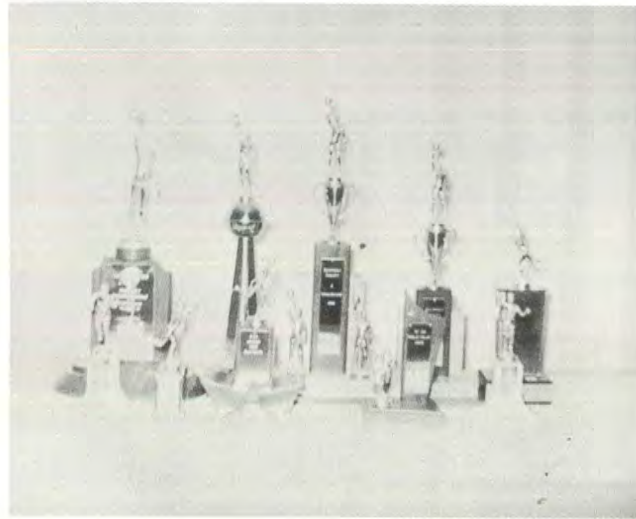






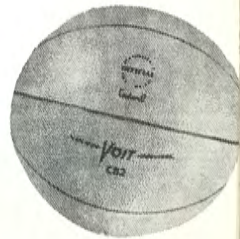
B-D Champs  
2nd K-36  
2nd County

## Achievements of '59



Wins  
5  
Losses  
2  
Ties  
1

1st County  
1st District  
1st K-36



## 'M' Men

FIRST ROW: J. Ricklefs, L. Heinen, J. Meidinger, J. Denton, D. Higgins, L. Ptomey, J. Severin. SECOND ROW: J. Bottiger, R. Nigus, S. Rader, F. Knecht, Coach Vance, Coach Thurlow,

M. Barrow, T. Turpin, B. Long, THIRD ROW: J. Pinkston, G. McNemee, D. Ricklefs, R. Anderson, D. Herpich, L. Tilbury, B. Tilbury, E. Williams.





# Girls' Basketball



KNEELING: Marcille Franklin, Delores Diebolt, Loree George. STANDING: Betty Pauly, Catherine Matthias, Ruth Long, Sharon Rader, Miss Watkins, Coach; Virginia Fulk, Linda Denton, Diane Fulk, Susan Boos.

# Ugliest Man In School

Jim (Dinger) Meidinger



Don't You Agree?

Chosen By Popular Vote!









Jon Denton











**ADVERTISING**

**ADVERTISING**



AT MADISON SQUARE GARDEN . . .

AT BOSTON CELTICS HOME GAMES . . .

AT NATIONAL A. A. U. TOURNAMENTS . . .

AT N. C. A. A. FINALS . . .

---

Everywhere Championship Basketball  
Is Played, You'll Find A Hillyard Floor

---

. . . JUST LIKE THE ONE AT MIDWAY HIGH

Hillyard Gym Finishes  
Are Chosen For Over  
15,000 School and College  
Gymnasiums Throughout  
The World.



ST. JOSEPH, MISSOURI

Branches and Warehouses

In Principal Cities

# HILLYARD CHEMICAL CO.



# JOHN G. BUSBOOM GENERAL CONTRACTOR

CONSTRUCTION SUPERINTENDENT: ORVILLE STEVENS

P. O. BOX 74

PHONE TAYLOR 3-6417

SALINA, KANSAS



BEST WISHES TO

MIDWAY HIGH SCHOOL

It Has Been A Pleasure To Serve You



COMPLIMENTS OF

# The Stanton Mortuary

PHONE 70

800 Kansas Avenue

ATCHISON

KANSAS

# The Bank of Denton

ESTABLISHED IN 1894

CAPITAL - SURPLUS \$115,000



DENTON

KANSAS



# Doniphan County Equipment Inc.

PAT FRANKEN  
Vice President and  
General Manager

Troy, Kansas

CHARLES LIBEL  
President

Leona, Kansas  
Phone Elliot 9-4335



YOUR IHC DEALER

TROY

KANSAS

SHIP TO

## Missouri Livestock Commission Co.

GEORGE McKNIGHT

SOUTH ST. JOSEPH, MISSOURI



# C. H. Gish Company

Lumber

Hardware

Paint



EL 9-3495

Denton

Kansas

# Charles Bembreck

Bulldozing - Pond Building

Phone 273

Troy

Kansas

# Streib & Son Service Shop

Plumbing

Electric Pumps

Bathrooms

Heating

EL 9-4185



Cooling

Gas - Oil

Wiring Houses

Stoves

Leona, Kansas



# R & W Service

Gasoline

Oil

Grease

EL 9-3632

Denton

Kansas

Compliments Of

## Kerford Quarry

Gravel

Lime

Sand

Atchison

Kansas

### Boosters

ALLIE HEINEN  
Denton, Kansas

JOHN FOLEY  
Denton, Kansas

LEONA GARAGE  
Leona, Kansas

HIGHLAND GARAGE  
Highland, Kansas

AANON JAMVOLD  
Leona, Kansas

HORNER STANDARD STATION  
Highland, Kansas

MOORE'S MARKET  
Leona, Kansas

HAWK'S HATCHERY  
Atchison, Kansas

THE VOGUE  
St. Joseph, Missouri

GLEN TILBURY'S GARAGE  
Bendena, Kansas

WALT'S BARBER SHOP  
Troy, Kansas

SPECTOR'S SPORTING GOODS  
St. Joseph, Missouri

VICTORY CAFE  
St. Joseph, Missouri

MILLER'S MOTEL  
Wathena, Kansas

ELLIS DRUG STORE  
Highland, Kansas

T. A. ALFERS  
Denton, Kansas

MICHEAL'S PLUMBING  
Hiawatha, Kansas

MAILLER ELECTRIC CO.  
Leona, Kansas



## Roland's General Store

Phone

EL 9-4635



Severance

Kansas

## Winchester Hardware

Phone EL 9-3385

Denton

Kansas

## Boos Appliance and Hardware

You Call

Highland



We Haul

Kansas

## Winchester Grain Company

Phone EL 9-3435

Denton

Kansas



## Triplett Grocery

Fruits

Vegetables

EL 9-3425



Groceries

Meats

Denton, Kansas

Compliments Of

## City of Leona

MAYOR -- AANON JAMVOLD

COUNCIL MEMBERS

Dick Delaney  
Neil Janicke  
Olaf Johnson  
Walter Ditzfeld  
Fred Gorforth

## Turpin's Cafe

EL 9-3445



Denton, Kansas

Compliments Of

## Keebler Grocery

Phone Elliot 9-3405

Denton, Kansas



# The Doniphan Electric Co-operative Association, Inc.



Troy

Kansas

## MURPHY'S

St. Joseph

Missouri

## Retters Prescription Pharmacy

Veterinary Supplies

Hog Cholera

Livestock Supplies

Expert Prescription

Filling At Fair Prices

Phone Elliot 9-3485

Denton, Kansas

## Ukena Hardware Co.

Your Store For Complete

Line of Hardware and

General Electric Appliances

Phone GI 2-3771

Highland

Kansas



Compliments Of  
**Troy Furniture &  
Hardware Co.**  
Forrest H. Hagenbuch, Owner

Troy, Kansas

Compliments Of  
**Leo's Recreation Center**

Denton, Kansas

**Jay Hawk Cafe**

Gibson 2-3681

Highland, Kansas

**Dick Larzelere Motors**

Phone 254

Troy, Kansas

Compliments Of  
**Denton Oil Company**

Denton, Kansas

Compliments Of  
**Doniphan County Abstract Co.**

Robert A. Reeder

George T. Van Bebber

Troy, Kansas

**Gronniger Garage**

General Repairs

Auto - Truck - Tractor

On All Makes

Acetylene Electric Welding

Phone 296

Troy

Kansas

Compliments Of

**Coca-Cola**



St. Joseph, Missouri



## **A. J. August Clothing**

Men's & Boys' Wear

4th & Felix

St. Joseph, Missouri

## **Strathmann Studio**

St. Joseph, Missouri

## **Denton Beauty Shop**

Mr. Lillis Kimmi

Haircuts & Shaping  
Permanents

Shampoos                      End Curls

Open Every Day Except Sunday

Phone EL 9-3365

## **Farmers Union Insurances**

Insurances Of All Kinds

Charles B. Hartman

Phone EL 9-4401

Leona, Kansas

## **Marie's Cafe**

Meals, Short Orders

Pop, Ice Cream, Candy

All Occasion Cards

Phone EL 9-4165

Leona

Kansas

## **Martin Cleaners**

Pick Up and Delivery

Tuesday & Friday

Drapes - Curtains - Blankets  
Repair

Denton - Severance - Leona  
Highland

Compliments Of

## **Winzer Hardware**

Phone 147

Troy, Kansas

## **Christensen Grocery**

Fruits - Vegetables - Meats

Phone 46

Bendena, Kansas



## Sheda Insurance Agency

Complete Insurance Coverage

Fire - Auto - Accident

Let Us Solve  
Your Insurance Needs

Phone EL 9-4765

Severance, Kansas

## Seeger Agency

Insurance and Real Estate

Marjorie Kerr Seeger

722 Kansas Avenue

Atchison, Kansas

Compliments Of

### Dr. & Mrs. Yoder

Denton, Kansas

Compliments Of

### Hardy's Cafe

Wathena, Kansas

### James Dale

Fertilizer

Wathena

Kansas

Compliments Of

### Joe Rush

Severance

Kansas

Compliments Of

### Wassan's Service Station

Troy, Kansas

The Seniors wish to thank  
each and everyone of you  
for helping us to publish  
this Annual.



## **J. D. and Jerry M. Baker**

Phone 31 and 1119

**CONSUMERS OIL CO.**

Bendena, Kansas

Compliments Of

## **Leon Erdley**

Your Mobilgas Man

EL 9-4675 -- Office

EL 9-4793 -- Residence

Severance, Kansas

Compliments Of

## **Tibbetts Mortuary**

Troy, Kansas

## **St. Joseph Implement Company**

802 South 6th

Phone 4-0583

St. Joseph 24, Missouri

## **Tilbury Truck Line**

General Trucking

No Job Too Large

No Job Too Small

Phone 38 Bendena, Kansas

Compliments Of

## **Fred Moenning**

Your Phillips 66 Dealer

Leona Kansas

## **Highland Lumber Company**

Lumber and Building  
Materials

Phone GI 2-3841

Highland Kansas

## **C. H. Schoenfelder**

Truckline

Phone EL 9-4275

You Call, We Haul  
Long Distance Or Local

Leona, Kansas



# *Annuals of Distinction*

FOR OVER TWENTY YEARS



**HIGH SCHOOL  
COLLEGE  
UNIVERSITY  
ANNUALS**

*artistically created  
by master craftsmen*

*Walsworth*  
**PUBLISHING COMPANY**  
MARCELINE, MO.



